

may • june 2006 calendar



Titian, *Pastoral Concert* (Concert Champêtre),
c. 1510. Musée du Louvre, Département des
Peintures, Paris. Photo: Réunion des Musées
Nationaux/Art Resource, NY

June 18–September 17, 2006
West Building, Main Floor

**Belini, Giorgione,
Titian, and the
Renaissance of
Venetian Painting**

National Gallery of Art, Washington

National Gallery of Art
Sixth Street and Constitution Avenue NW
Washington, DC

Mailing address:
2000B South Club Drive
Landover, MD 20785

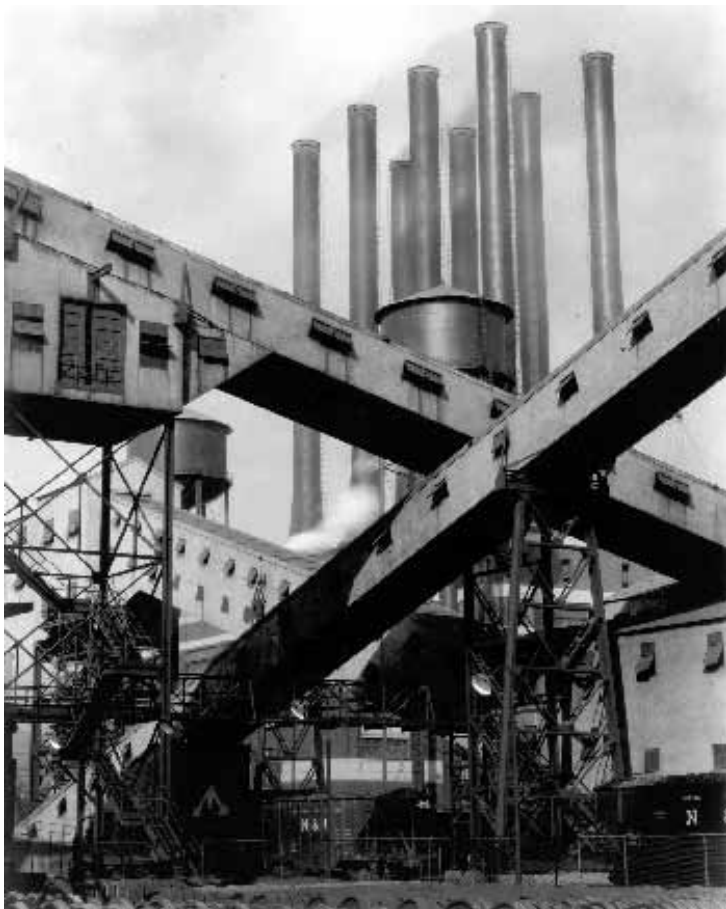
(202) 737-4215 • www.nga.gov

Non-Profit Organization
U.S. Postage
PAID
Washington, DC
Permit No. 9712

May • June

VISIT WWW.NGA.GOV/GINFO/GENINFO.HTM FOR THE MOST UP-TO-DATE CALENDAR OF EVENTS

exhibitions



OPENING EXHIBITION

Charles Sheeler: Across Media

May 7–August 27, 2006
East Building, Mezzanine

This is the first exhibition to explore the relationships among photography, film, and more traditional media, such as painting and drawing, in the work of American modernist Charles Sheeler. The exhibition features many of the artist's greatest achievements including striking examples from his famous 1917 Doylestown series of photographs; the film *Manhatta* (1920), a collaboration between Sheeler and the photographer Paul Strand that is regarded as the first avant-garde film made in the United States; and two of Sheeler's best-known paintings, the iconic images of the Ford Motor Company's River Rouge Plant *Classic Landscape* (1931) and *American Landscape* (1930).

Charles Sheeler, *Criss-Crossed Conveyors, River Rouge Plant, Ford Motor Company, 1927*. Lent by The Metropolitan Museum of Art, Ford Motor Company Collection, Gift of Ford Motor Company and John C. Waddell, 1987

Highlighting Sheeler's fascination with the interplay between various media is his enigmatic *The Artist Looks at Nature* (1943), a painted depiction of a drawing based on a photograph that will be shown alongside the very works from which it is derived. The exhibition concludes with a series of works depicting New England mills, inspired by Sheeler's experiments with photomontage in the 1940s and 1950s.

Organized by the National Gallery of Art, Washington.

The exhibition is made possible by the generous support of Altria Group, Inc.

Catalogue: hardcover, \$45

Learn more: www.nga.gov/exhibitions/sheelerinfo.htm

CONTINUING EXHIBITION

The Poetry of Light: Venetian Drawings from the National Gallery of Art

Through October 1, 2006
West Building, Ground Floor

Some 134 works from the Gallery's collection reveal Venice as the city of origin for some of the finest artists in history. The exhibition features drawings by Andrea Mantegna, Giovanni Bellini, Vittore Carpaccio, Giorgione, Lorenzo Lotto, and Titian. One of the earliest surviving European drawings in colored chalks, by Jacopo Bassano, and excellent works by Veronese, Jacopo Tintoretto, and Paolo Farinati highlight the later sixteenth-century section.

The second great flowering of Venetian drawings, in the eighteenth century, is seen in outstanding works by Giovanni Battista Piazzetta, Giovanni Battista Tiepolo, Marco Ricci, Canaletto, and Francesco Guardi. The exhibition ends with works that illustrate the widespread influence of Venetian art on succeeding generations by native Venetians who went abroad, such as Giovanni Battista Piranesi, and artists from other countries who flocked to Venice in the nineteenth century.

Organized by the National Gallery of Art, Washington.

Learn more: www.nga.gov/exhibitions/venetianinfo.htm



Roger Fenton, *Fruit and Flowers, 1860*.
National Gallery of Art, Washington,
Paul Mellon Fund

CONTINUING EXHIBITION

Photographic Discoveries: Recent Acquisitions

Through July 30, 2006
West Building, Ground Floor

Seventy works by such celebrated photographers as William Henry Fox Talbot, Eugène Atget, Alfred Stieglitz, Aleksandr Rodchenko, and Brassai that were made during the first century of the medium's history, from the early 1840s to the 1940s, are among significant new Gallery acquisitions of photographs.

Organized around the theme of discovery, the exhibition demonstrates how photographers sought to understand techniques for making pictures using this new medium, and how they came to recognize and exploit the ways in which photography infuses subjects such as portraiture, landscape, and still life with vitality and meaning.

Organized by the National Gallery of Art, Washington.

The exhibition is made possible through the generous support of the Trellis Fund and The Ryna and Melvin Cohen Family Foundation.

Learn more: www.nga.gov/exhibitions/photodiscoveryinfo.htm

OPENING EXHIBITION

Bellini, Giorgione, Titian, and the Renaissance of Venetian Painting

June 18–September 17, 2006
West Building, Main Floor

The Gallery is the premiere venue for a major new international exhibition of more than fifty masterpieces from the most exciting phase of the Renaissance in Venice. The exhibition explores the relationships among Giovanni Bellini, Giorgione, Titian, and other artists, emphasizing their innovative treatments of new pictorial themes such as the pastoral landscape and revealing what modern conservation science has discovered about their techniques.

Among the most admired masterworks of the Renaissance, Titian's *Pastoral Concert (Concert Champêtre)* (c. 1510), is being lent by the Louvre to the United States for the first time. The exhibition also features significant loans from major European museums such as the Kunsthistorisches Museum, Vienna; The National Gallery, London; the Museo del Prado, Madrid; and the Galleria degli Uffizi, Florence.

Organized by the National Gallery of Art, Washington, and the Kunsthistorisches Museum, Vienna.

This exhibition is made possible by Bracco, an international leader in diagnostic imaging.

The exhibition is supported by an indemnity from the Federal Council on the Arts and the Humanities.

Catalogue: hardcover, \$65;
softcover, \$45

Learn more: www.nga.gov/exhibitions/renaissanceinfo.htm

exhibitions

CONTINUING EXHIBITION

Master Drawings from the Woodner Collections

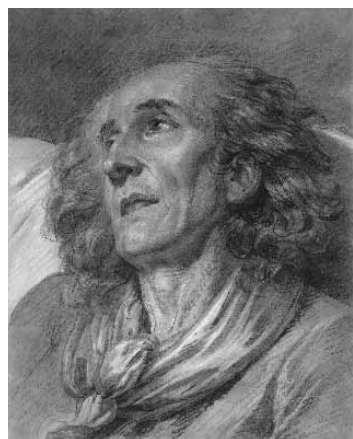
*Through October 1, 2006
West Building, Central Gallery*

Ian Woodner (1903–1990) formed one of the foremost private collections of old master and modern drawings in the United States. In 1991 Woodner's daughters, Dian and Andrea, placed the core drawings of the collection at the Gallery, in honor of their father's achievement as a collector. This exhibition, celebrating the fifteenth anniversary of the arrival of the Woodner drawings at the Gallery, honors the ongoing generosity of Dian and Andrea Woodner, who have augmented the collection with gifts in addition to their initial donation.

Spanning more than six centuries of European draftsmanship, the show includes outstanding works by such great artists as Botticelli, Leonardo da Vinci, Albrecht Dürer, Raphael, Rembrandt van Rijn, Jean-Honoré Fragonard, Francisco de Goya, Jean-Auguste-Dominique Ingres, Edgar Degas, and Pablo Picasso.

Organized by the National Gallery of Art, Washington.

Learn more: www.nga.gov/exhibitions/woodnerinfo.htm



Jean-Baptiste Greuze, *Bust of an Old Man*, probably 1763. National Gallery of Art, Washington, Woodner Collections, Dian Woodner

CLOSING EXHIBITION

Dada

*Through May 14, 2006
East Building, Mezzanine*

Dada is the first major American museum survey of this influential avant-garde art movement. Responding to the disasters of World War I and an emerging modern media and machine culture, Dada artists proposed innovative strategies of art-making including collage, montage, assemblage, chance, readymades, performance, and media pranks, profoundly shaping the course of twentieth-century art. More than forty artists are represented, including Hans Arp, Marcel Duchamp, Max Ernst, George Grosz, Raoul Hausmann, John Heartfield, Hannah Höch, Francis Picabia, Man Ray, Hans Richter, Kurt Schwitters, Sophie Taeuber, and Tristan Tzara.

Organized by the National Gallery of Art, Washington, and the Centre Pompidou, Paris, in collaboration with The Museum of Modern Art, New York.

The exhibition is made possible through the generous support of the Anna-Maria and Stephen Kellen Foundation and the Catherine B. Reynolds Foundation.

Additional support for the exhibition has been provided by the Annenberg Foundation and Thomas G. Klarnet.

The brochure is made possible by Aaron and Barbara Levine and Pro Helvetia Arts Council of Switzerland.

The film at the entrance to the exhibition is made possible by the HRH Foundation.

The exhibition is supported by an indemnity from the Federal Council on the Arts and the Humanities.

Catalogue: hardcover, \$65; softcover, \$40

Learn more: www.nga.gov/exhibitions/dadainfo.htm



CLOSING EXHIBITION

Amorous Intrigues and Painterly Refinement: The Art of Frans van Mieris

*Through May 21, 2006
West Building, Dutch Cabinet Galleries*

Praised by contemporaries as the most important of all Leiden *fijnschilders* (masters of fine painting), Frans van Mieris (1635–1681) is best known for his innovative interior scenes and elegant portraits.

Although Van Mieris painted some allegories and portraits, most of his works are thoughtful yet lighthearted genre scenes, sometimes painted on copper, depicting charlatans, peasants, elegantly dressed ladies, and soldiers in works that frequently explore themes of courtship and seduction.

Organized by the Royal Picture Gallery Mauritshuis, The Hague, in association with the National Gallery of Art, Washington.

The exhibition is made possible by anonymous donors to the National Gallery of Art.

Frans van Mieris, *The Duet*, 1658.
Staatliches Museum, Schwerin

The exhibition is supported by an indemnity from the Federal Council on the Arts and the Humanities.

A twelve-minute introductory film about Van Mieris' art, produced by Bobcat TV for the Royal Picture Gallery Mauritshuis, screens in the West Building Micro Gallery and Information Room. *In Dutch with English subtitles.*

The film is made possible by Mr. and Mrs. Thomas S. Kaplan.

Catalogue: hardcover, \$50

Learn more: www.nga.gov/exhibitions/vanmierisinfo.htm

CLOSING EXHIBITION

Cézanne in Provence

*Through May 7, 2006
West Building, Main Floor*

The National Gallery of Art is the premiere venue for the principal international exhibition marking 2006 as the centennial of the death of Paul Cézanne (1839–1906), one of the greatest and most influential artists of the late nineteenth and early twentieth centuries.

Organized by the National Gallery of Art, Washington, the Musée Granet and the Communauté du Pays d'Aix, Aix-en-Provence, and the Réunion des musées nationaux, Paris.

This exhibition is made possible by a generous grant from the DaimlerChrysler Corporation Fund.

The exhibition is supported by an indemnity from the Federal Council on the Arts and the Humanities.

Catalogue: hardcover, \$60; softcover, \$45

Learn more: www.nga.gov/exhibitions/cezanneinfo.htm

UPCOMING EXHIBITIONS

Henri Rousseau: Jungles in Paris

*July 16–October 15, 2006
www.nga.gov/exhibitions/rousseauinfo.htm*

Alexandre Louis- Marie Charpentier (1856–1909)

*August 6, 2006–January 28, 2007
www.nga.gov/exhibitions/charpentierinfo.htm*

Constable's Great Landscapes: The Six-Foot Paintings

*October 1–December 31, 2006
www.nga.gov/exhibitions/constableinfo.htm*

calendar

M A Y



Film still from *Five Children and It*, screening May 13 and 14 as part of the children’s film program

- eb

East Building
Art Information Desk
- eba

East Building Auditorium
- ebsa

East Building Small Auditorium
- wb

West Building Rotunda
- wblh

West Building Lecture Hall
- wgc

West Building,
West Garden Court
- sg

Sculpture Garden
- sgp

Sculpture Garden Pavilion Café

See listings under Guided Tours for daily tours of the collections and foreign language tours.

Programs subject to change. For up-to-date information, visit our Web site: www.nga.gov.

1	MONDAY	12:00	Gallery Talk <i>The Pencil of Nature and the Mirror with a Memory: The Photographic Process as Art and Science</i> (wb)
		2:00	Gallery Talk Ailsa Mellon Bruce’s <i>Small French Paintings from the Time of Cézanne</i> (eb)
2	TUESDAY	10:15	Gallery Talk <i>Introductory Slide Overview: Cézanne in Provence</i> (wblh)
		12:00	Gallery Talk <i>Dada: An Overview</i> (eb)
		2:00	Gallery Talk Ailsa Mellon Bruce’s <i>Small French Paintings from the Time of Cézanne</i> (eb)
3	WEDNESDAY	12:10	Concert Barbara Hollinshead and Howard Bass (wblh)
		1:00	Gallery Talk <i>Morton Schamberg: American Dadaist?</i> (eb)
4	THURSDAY	10:15	Gallery Talk <i>Introductory Slide Overview: Cézanne in Provence</i> (wblh)
		12:30	Film <i>Cézanne in Provence</i> (eba)
		1:00	Gallery Talk <i>Morton Schamberg: American Dadaist?</i> (eb)
5	FRIDAY	12:30	Film <i>Cézanne in Provence</i> (eba)
		2:15	Gallery Talk <i>Introductory Slide Overview: Cézanne in Provence</i> (wblh)
		3:30	Lecture <i>The Grammar of Cézanne’s Drawing</i> (eba)
6	SATURDAY	10:15	Gallery Talk <i>Introductory Slide Overview: Cézanne in Provence</i> (wblh)
		11:00	Lecture <i>Cézanne’s Provence</i> (eba)
		1:00	Gallery Talk <i>Morton Schamberg: American Dadaist?</i> (eb)
7	SUNDAY	1:00	Gallery Talk <i>Morton Schamberg: American Dadaist?</i> (eb)
			Family Activity Workshop: <i>Making Faces</i> (wb)
		2:00	Lecture <i>Charles Sheeler: An Introduction to the Exhibition</i> (eba)
		4:00	Film and Lecture <i>The Poetic Reality of Satyajit Ray</i> (eba)
		6:30	Concert Steven Honigberg and Kathryn Brake (wgc)

8	MONDAY	12:00	Gallery Talk <i>Chaim Soutine’s “Piece of Beef”</i> (eb)
		2:00	Gallery Talk <i>The Pencil of Nature and the Mirror with a Memory: The Photographic Process as Art and Science</i> (wb)
9	TUESDAY	12:00	Gallery Talk <i>Something New: On Kawara’s “Title” (1965)</i> (eb)
		1:00	Gallery Talk <i>Amorous Intrigues and Painterly Refinement: The Art of Frans van Mieris</i> (wb)
10	WEDNESDAY	12:10	Concert Arco Voce (ebsa)
		1:00	Gallery Talk <i>Morton Schamberg: American Dadaist?</i> (eb)
11	THURSDAY	12:00	Lecture <i>The Power of Light in Museums</i> (wblh)
			Gallery Talk <i>Dada: An Overview</i> (eb)
		1:00	Gallery Talk <i>Amorous Intrigues and Painterly Refinement: The Art of Frans van Mieris</i> (wb)
13	SATURDAY	10:30	Children’s Film <i>Five Children and It</i> (eba)
		12:00	Lecture <i>The Power of Light in Museums</i> (wblh)
			Gallery Talk <i>Dada: An Overview</i> (eb)
		1:00	Film Video Master: Nam June Paik (eba)
		2:00	Lecture <i>David Finley: Quiet Force for America’s Arts</i> (eba)
			Gallery Talk <i>The Pencil of Nature and the Mirror with a Memory: The Photographic Process as Art and Science</i> (wb)
		3:00	Film Billy Wilder at 100 series: <i>Witness for the Prosecution</i> (eba)
14	SUNDAY	11:30	Children’s Film <i>Five Children and It</i> (eba)
		1:00	Gallery Talk <i>Dada in New York</i> (eb)
			Family Activity Workshop: <i>Making Faces</i> (wb)
		2:00	Lecture <i>Baroness Elsa and Dada</i> (eba)
		4:30	Film <i>Who Gets to Call It Art?</i> (eba)
		6:30	Concert Joseph Schwartz (wgc)

15	MONDAY	12:10	Lecture <i>“Aurifex Inventor”: The Art of the Goldsmith in Early Baroque Rome</i> (ebsa)
		1:10	Lecture <i>“Aurifex Inventor”: The Art of the Goldsmith in Early Baroque Rome</i> (ebsa)
		2:00	Gallery Talk Ailsa Mellon Bruce’s <i>Small French Paintings from the Time of Cézanne</i> (eb)
16	TUESDAY	1:00	Gallery Talk <i>American Selections from the Sculpture Garden</i> (weather permitting) (sgp)
17	WEDNESDAY	12:00	Gallery Talk <i>Something New: On Kawara’s “Title” (1965)</i> (eb)
		12:10	Concert Stephen Ackert (wblh)
		1:00	Gallery Talk <i>Amorous Intrigues and Painterly Refinement: The Art of Frans van Mieris</i> (wb)
18	THURSDAY	12:00	Gallery Talk <i>Something New: On Kawara’s “Title” (1965)</i> (eb)
19	FRIDAY	12:00	Gallery Talk <i>Chaim Soutine’s “Piece of Beef”</i> (eb)
		1:00	Gallery Talk <i>Giorgio De Chirico’s “Conversation among the Ruins”</i> (eb)
20	SATURDAY	12:00	Gallery Talk <i>Chaim Soutine’s “Piece of Beef”</i> (eb)
		12:30	Film Video Master: Nam June Paik (eba)
		1:00	Gallery Talk <i>American Selections from the Sculpture Garden</i> (weather permitting) (sgp)
		2:30	Film <i>In Praise of Independents: “The Flaberty”</i> (eba)
21	SUNDAY	11:30	Family Activity Stories in Art: <i>My Name Is Georgia</i> (eb)
		12:00	Gallery Talk <i>Giorgio De Chirico’s “Conversation among the Ruins”</i> (eb)
		1:00	Family Activity Stories in Art: <i>My Name Is Georgia</i> (eb)
		2:00	Lecture <i>The Building of a Collection: Flemish Painting at the National Gallery of Art</i> (eba)
		4:00	Film Billy Wilder at 100 series: <i>Irma la Douce</i> (eba)
		6:30	Concert National Gallery Orchestra (wgc)

22	MONDAY	12:00	Gallery Talk <i>Giorgio De Chirico’s “Conversation among the Ruins”</i> (eb)
23	TUESDAY	11:00	Gallery Talk <i>Giorgio De Chirico’s “Conversation among the Ruins”</i> (eb)
		12:00	Gallery Talk <i>Something New: On Kawara’s “Title” (1965)</i> (eb)
		1:00	Gallery Talk <i>American Selections from the Sculpture Garden</i> (weather permitting) (sgp)
24	WEDNESDAY	12:10	Concert Piffaro (wblh)
		2:00	Gallery Talk Ailsa Mellon Bruce’s <i>Small French Paintings from the Time of Cézanne</i> (eb)
25	THURSDAY	11:00	Gallery Talk <i>Giorgio De Chirico’s “Conversation among the Ruins”</i> (eb)
26	FRIDAY	5:00	Jazz in the Garden Thad Wilson Jazz Orchestra (sg)
27	SATURDAY	12:30	Film Billy Wilder at 100 series: <i>The Fortune Cookie</i> (eba)
		3:00	Film Billy Wilder at 100 series: <i>Avanti!</i> (eba)
28	SUNDAY	2:00	Lecture <i>“En Plein Air”: American Open-Air Painting</i> (eba)
		4:00	Film Billy Wilder at 100 series: <i>Menschen am Sonntag: Mauvaise Graine</i> (eba)
29	MONDAY	12:00	Film Billy Wilder at 100 series: <i>The Apartment</i> (eba)
		2:30	Film Billy Wilder at 100 series: <i>The Spirit of St. Louis</i> (eba)
30	TUESDAY	12:00	Gallery Talk <i>Master Drawings from the Woodner Collections</i> (wb)
31	WEDNESDAY	12:10	Concert Ars Lyrica (wblh)

calendar

J U N E



Film still from *Pelican Man*, screening June 3, 4, 7, and 14 as part of the children's film program

1 12:00	THURSDAY Gallery Talk <i>Master Drawings from the Woodner Collections</i> (wb)
2 5:00	FRIDAY Jazz in the Garden Cubano Groove (sg)
3 10:30 2:30	SATURDAY Children's Film <i>Pelican Man</i> (eba) Film Theo Angelopoulos: Myth and History series: <i>The Travelling Players</i> (eba)
4 11:30 12:00 2:00 6:30	SUNDAY Children's Film <i>Pelican Man</i> (eba) Gallery Talk <i>Master Drawings from the Woodner Collections</i> (wb) Lecture and Film <i>Marsden Hartley's "Cleophas and His Own"</i> (eba) Concert National Gallery Chamber Players String Quartet (wgc)
6 12:00 1:00	TUESDAY Gallery Talk <i>The Poetry of Light: Venetian Drawings from the National Gallery of Art</i> (wb) Gallery Talk <i>Charles Sheeler: Across Media</i> (eb)

Guide to Locations

eb	East Building Art Information Desk
eba	East Building Auditorium
ebsa	East Building Small Auditorium
wb	West Building Rotunda
wblh	West Building Lecture Hall
wgc	West Building, West Garden Court
sg	Sculpture Garden
sgp	Sculpture Garden Pavilion Café

See listings under Guided Tours for daily tours of the collections and foreign language tours.

Programs subject to change.
For up-to-date information, visit our Web site: www.nga.gov.

7 10:30 12:00 1:00	WEDNESDAY Children's Film <i>Pelican Man</i> (eba) Gallery Talk <i>Master Drawings from the Woodner Collections</i> (wb) Gallery Talk <i>Charles Sheeler: Across Media</i> (eb)
8 12:00	THURSDAY Gallery Talk <i>The Poetry of Light: Venetian Drawings from the National Gallery of Art</i> (wb)
9 12:00	FRIDAY Gallery Talk <i>Master Drawings from the Woodner Collections</i> (wb)
 1:00 5:00	Gallery Talk <i>Grand Tour View Paintings from Rome, Venice, and Saxony</i> (wb) Jazz in the Garden Allyn Johnson Trio (sg)
10 12:00	SATURDAY Gallery Talk <i>The Poetry of Light: Venetian Drawings from the National Gallery of Art</i> (wb)
 2:30	Film Theo Angelopoulos: Myth and History series: <i>Alexander the Great</i> (eba)
11 11:00 11:30 1:00 4:30 6:30	SUNDAY Lecture <i>Charles Sheeler: Across Media</i> (eba) Family Activity Stories in Art: <i>Olivia</i> (eb) Gallery Talk <i>Grand Tour View Paintings from Rome, Venice, and Saxony</i> (wb) Family Activity Stories in Art: <i>Olivia</i> (eb) Film and Concert <i>Manhatta</i> and Charles Sheeler (eba) Concert Sara Davis Buechner (wgc)
13 12:00	TUESDAY Gallery Talk <i>The Poetry of Light: Venetian Drawings from the National Gallery of Art</i> (wb)
14 10:30 12:00 1:00	WEDNESDAY Children's Film <i>Pelican Man</i> (eba) Gallery Talk <i>Charles Sheeler: Across Media</i> (eb) Gallery Talk <i>Grand Tour View Paintings from Rome, Venice, and Saxony</i> (wb)

15 12:00	THURSDAY Gallery Talk <i>The Poetry of Light: Venetian Drawings from the National Gallery of Art</i> (wb)
16 1:00 5:00	FRIDAY Gallery Talk <i>Grand Tour View Paintings from Rome, Venice, and Saxony</i> (wb) Jazz in the Garden Nasar Abadey Quintet (sg)
17 2:30	SATURDAY Film Theo Angelopoulos: Myth and History series: <i>Voyage to Cythera</i> (eba)
18 2:00 4:30 6:30	SUNDAY Lecture <i>The Renaissance of Venetian Painting: An Introduction to the Exhibition</i> (eba) Film Theo Angelopoulos: Myth and History series: <i>The Beekeeper</i> (eba) Concert National Gallery Vocal Arts Ensemble (wgc)
21 12:00 1:00	WEDNESDAY Gallery Talk <i>Charles Sheeler: Across Media</i> (eb) Gallery Talk <i>Venetian Views: The Art of Canaletto, Bellotto, and Guardi</i> (wb)
22 1:00 2:00	THURSDAY Gallery Talk <i>Manet in Spain</i> (wb) Gallery Talk <i>Women in Black, Women in White</i> (wb)
23 1:00 2:00 5:00	FRIDAY Gallery Talk <i>Manet in Spain</i> (wb) Gallery Talk <i>Women in Black, Women in White</i> (wb) Jazz in the Garden Benito Gonzalez Trio (sg)

24 1:00 2:00 4:00	SATURDAY Gallery Talk <i>Manet in Spain</i> (wb) Film Theo Angelopoulos: Myth and History series: <i>Landscape in the Mist</i> (eba) Gallery Talk <i>Women in Black, Women in White</i> (wb) Film Theo Angelopoulos: Myth and History series: <i>Eternity and a Day</i> (eba)
25 1:00 2:00 4:00 6:30	SUNDAY Gallery Talk <i>Venetian Views: The Art of Canaletto, Bellotto, and Guardi</i> (wb) Lecture <i>The Renaissance Studiolo: Reading, Collecting, and the Invention of Mythological Painting</i> (eba) Film Theo Angelopoulos: Myth and History series: <i>The Weeping Meadow</i> (eba) Concert Drew Minter and Tempesta di Mare (wgc)
26 12:00	MONDAY Gallery Talk <i>Bellini, Giorgione, Titian, and the Renaissance of Venetian Painting</i> (wb)
27 12:00 1:00	TUESDAY Gallery Talk <i>Bellini, Giorgione, Titian, and the Renaissance of Venetian Painting</i> (wb) Gallery Talk <i>Venetian Views: The Art of Canaletto, Bellotto, and Guardi</i> (wb)
28 1:00	WEDNESDAY Gallery Talk <i>Manet in Spain</i> (wb)
29 12:00 1:00	THURSDAY Gallery Talk <i>Music and Art in Renaissance Venice</i> (wblh) Gallery Talk <i>Venetian Views: The Art of Canaletto, Bellotto, and Guardi</i> (wb)
30 12:00 5:00	FRIDAY Gallery Talk <i>Bellini, Giorgione, Titian, and the Renaissance of Venetian Painting</i> (wb) Jazz in the Garden Rumba Club (sg)

programs

Guided Tours

West Building Rotunda (wb) or East Building Art Information Desk (eb)
For details: www.nga.gov/programs/tours.htm

1900 to Now: An Introduction to the East Building Collection (eb)
Monday–Friday at 10:30 and 1:30
Saturday and Sunday at 11:30 and 3:30

American Collection (wb)
Daily at 2:30

Early Italian to Early Modern: An Introduction to the West Building Collection (wb)
Monday–Friday at 11:30
Saturday at 10:30 and 12:30
Sunday at 12:30 and 4:30

Italian Renaissance Collection (wb)
Monday, Wednesday, and Friday at 1:30
Saturday and Sunday at 1:30

Nineteenth-Century French Collection (wb)
Monday–Friday at 12:30
Saturday and Sunday at 3:30

Points of View: The Painter's Choices (wb)
Monday–Friday at 3:30

The Sculpture Galleries (wb)
Tuesday and Thursday at 1:30
Saturday and Sunday at 11:30

Foreign Language Tours

American art in French: May 1 and June 5 at 12:00 (wb)

American art in Spanish: May 26 and June 23 at 12:00 (wb)

Chinese: May 17 and June 14 at 12:00 (wb) and 2:00 (eb)

French: May 15 and June 19 at 12:00 (wb) and 2:00 (eb)

German: May 16 and 20; June 20 and 24 at 12:00 (wb) and 2:00 (eb)

Italian: May 9 and 13; June 13 and 17 at 12:00 (wb) and 2:00 (eb)

Japanese: May 6, 11, 16, and 25; June 3, 8, 13, and 22 at 12:00 (wb) and 2:00 (eb)

Russian: May 13 and June 10 at 12:00 (wb) and 2:00 (eb)

Spanish: May 2, 11, and 13; June 6, 15, and 17 at 12:00 (wb) and 2:00 (eb)

Public Symposia

East Building Auditorium (eba)
For details: www.nga.gov/programs/lecture.htm

May 6: *Cézanne's Provence.* Illustrated lectures by noted scholars André Dombrowski, Joachim Pissarro, Theodore Reff, Richard Shiff, and Kathryn A. Tuma address Cézanne's paintings of Provence. Philip Conisbee, Nina Kallmyer, and Joseph J. Rishel will join for a panel discussion. (11:00–5:00)

June 11: *Charles Sheeler: Across Media.* Illustrated lectures by noted scholars Michele H. Bogart, Jan-Christopher Horak, Patricia Johnston, and Laura R. Katzman. A panel discussion and film screening will follow. (11:00–4:00)

Lectures

East Building Auditorium (eba) / 2:00, unless otherwise noted / For details: www.nga.gov/programs/lecture.htm

May 5: *The Grammar of Cézanne's Drawing.* Paul Smith, professor of the history of art, University of Warwick, England (3:30)

May 7: *Charles Sheeler: An Introduction to the Exhibition.* Charles Brock, assistant curator of American and British paintings, National Gallery of Art

May 14: *Baroness Elsa and Dada.* Irene Gammel, professor of English, Ryerson University; René Steinke, editor in chief of *The Literary Review*, Fairleigh Dickinson University. A book signing will follow.

May 21: *The Building of a Collection: Flemish Painting at the National Gallery of Art.* Arthur K. Wheelock Jr., curator of northern baroque paintings, National Gallery of Art. A book signing will follow.

May 28: *"En Plein Air": American Open-Air Painting.* Ross Merrill, chief of conservation, National Gallery of Art

June 4: *Marsden Hartley's "Cleophas and His Own."* Michael Maglaras, film director and professional opera singer

June 18: *The Renaissance of Venetian Painting: An Introduction to the Exhibition.* David Alan Brown, curator of Italian paintings, National Gallery of Art. A book signing will follow.

June 25: *The Renaissance Studiolo: Reading, Collecting, and the Invention of Mythological Painting.* Stephen J. Campbell, professor of the history of art, Johns Hopkins University. A book signing will follow.

Works in Progress

East Building Small Auditorium (ebsa) Mondays, 12:10 and 1:10

May 15: *"Aurifex Inventor": The Art of the Goldsmith in Early Baroque Rome.* C. D. Dickerson, volunteer, department of sculpture, National Gallery of Art

Behind the Scenes

West Building Lecture Hall (wblh) 12:00

May 11 and 13: *The Power of Light in Museums.* Gordon Anson, deputy chief of design and head of exhibition production, National Gallery of Art

Gallery Talks

West Building Rotunda (wb), East Building Art Information Desk (eb), West Building Lecture Hall (wblh), or Sculpture Garden Pavilion (sgp)
For details: www.nga.gov/programs/galtalks.htm

Special Exhibitions

Introductory Slide Overview: Cézanne in Provence (50 mins.). Division of education staff. May 2, 4, and 6 at 10:15; May 5 at 2:15 (wblh)

Dada: An Overview (60 mins.). Sally Shelburne. May 2, 11, and 13 at 12:00 (eb)

Morton Schamberg: American Dadaist? (30 mins.). Wilford W. Scott. May 3, 4, 6, 7, and 10 at 1:00 (eb)

Amorous Intrigues and Painterly Refinement: The Art of Frans van Mieris (50 mins.). Philip Leonard. May 9, 11, and 17 at 1:00 (wb)

Dada in New York (50 mins.). Sally Shelburne. May 14 at 1:00 (eb)

Master Drawings from the Woodner Collections (60 mins.). J. Russell Sale. May 30 and June 1, 4, 7, and 9 at 12:00 (wb)

Charles Sheeler: Across Media (60 mins.). Sally Shelburne. June 6 and 7 at 1:00; June 14 and 21 at 12:00 (eb)

The Poetry of Light: Venetian Drawings from the National Gallery of Art (50 mins.). Philip Leonard. June 6, 8, 10, 13, and 15 at 12:00 (wb)

Bellini, Giorgione, Titian, and the Renaissance of Venetian Painting (60 mins.). J. Russell Sale. June 26, 27, and 30 at 12:00 (wb)

Music and Art in Renaissance Venice (60 mins.). Stephen Ackert, head of the music department, and J. Russell Sale. June 29 at 12:00 (wblh)

Focus: The Collection

Ailsa Mellon Bruce's Small French Paintings from the Time of Cézanne (50 mins.). Dianne Stephens. May 1, 2, 15, and 24 at 2:00 (eb)

The Pencil of Nature and the Mirror with a Memory: The Photographic Process as Art and Science (50 mins.). Yali Lewis, intern. May 1 at 12:00; May 8 and 13 at 2:00 (wb)

Chaim Soutine's "Piece of Beef" (20 mins.). Anna O. Marley, graduate student lecturer. May 8, 19, and 20 at 12:00 (eb)

Something New: On Kawara's "Title" (1965) (20 mins.). Sally Shelburne. May 9, 17, 18, and 23 at 12:00 (eb)

American Selections from the Sculpture Garden (50 mins.). Kimberly Curtiss, graduate student lecturer. May 16, 20, and 23 at 1:00 (weather permitting) (sgp)

Giorgio De Chirico's "Conversation among the Ruins" (20 mins.). Diane Arkin. May 19 at 1:00; May 21 and 22 at 12:00; May 23 and 25 at 11:00 (eb)

Grand Tour View Paintings from Rome, Venice, and Saxony (50 mins.). Philip Leonard. June 9, 11, 14, and 16 at 1:00 (wb)

Venetian Views: The Art of Canaletto, Bellotto, and Guardi (50 mins.). David Gariff. June 21, 25, 27, and 29 at 1:00 (wb)

Women in Black, Women in White (60 mins.). Sarah Gordon, Wyeth Fellow. June 22, 23, and 24 at 2:00 (wb)

Manet in Spain (50 mins.). David Gariff. June 22, 23, 24, and 28 at 1:00 (wb)

Audio Programs

West and East Buildings, exhibition or Mall entrances / Rental: \$5 / For details: www.nga.gov/programs/audio.htm

Cézanne in Provence

Narrated by Gallery director Earl A. Powell III, this tour includes commentary by Philip Conisbee, senior curator of European paintings, National Gallery of Art; Mary Tompkins Lewis, visiting associate professor of fine arts, Trinity College, Hartford, Connecticut; and Joseph J. Rishel, curator of European painting before 1900, Philadelphia Museum of Art.

Dada

Narrated by Gallery director Earl A. Powell III, this tour includes commentary by Leah Dickerman, associate curator of modern and contemporary art, National Gallery of Art; Anne Umland, curator, department of painting and sculpture, The Museum of Modern Art, New York; and archival recordings including sound poems by Raoul Hausmann and interviews with Marcel Duchamp and Richard Huelsenbeck.

Bellini, Giorgione, Titian, and the Renaissance of Venetian Painting

Narrated by Gallery director Earl A. Powell III, this tour includes commentary by David Alan Brown, curator of Italian paintings, National Gallery of Art; Deborah Howard, head of the Department of the History of Art, University of Cambridge; and Peter Humfrey, professor at the School of Art History, University of Saint Andrews.

programs

Gallery Concerts

West Building, West Garden Court (wgc) at 6:30 / Midday concerts begin in May in the West Building Lecture Hall (wblh) at 12:10, unless otherwise indicated / First-come, first-seated one-half hour before each concert Entry at Sixth Street until 6:30 on Sundays / For details: (202) 842-6941 or www.nga.gov/programs/concerts.htm / The concerts on May 3, 10, 17, 24, and 31 are presented in honor of *Master Drawings from the Woodner Collections*.

May 3: Barbara Hollinshead, mezzo-soprano, and Howard Bass, lutenist; sixteenth- and seventeenth-century music (wblh, 12:10)

May 7: Steven Honigberg, cellist, and Kathryn Brake, pianist; music by Brahms, Chopin, Debussy, Mendelssohn, Astor Piazzolla, and David Popper (wgc)

May 10: Arco Voce; seventeenth- and eighteenth-century music for voice and instruments (ebsa, 12:10)

May 14: Joseph Schwartz, pianist; music by Chopin, Debussy, and Schubert (wgc)

May 17: Stephen Ackert, harp-sichordist; music by Gabrieli, Scarlatti, and sixteenth-century Italian composers (wblh, 12:10)

May 21: National Gallery Orchestra; Vladimir Lande, guest conductor; James Bryla, clarinetist; music by Debussy, Tchaikovsky, and Prokofiev (wgc)

May 24: Piffaro; sixteenth- and seventeenth-century music for wind instruments (wblh, 12:10)

May 28: No concert

May 31: Ars Lyrica; music for voice and instruments by Buxtehude, Caccini, and Monteverdi (wblh, 12:10)

June 4: National Gallery Chamber Players String Quartet; quartets by Mendelssohn and Shostakovich (wgc)

June 11: Sara Davis Buechner, pianist; music by Dvořák, Mozart, and other composers (wgc)

June 18: National Gallery Vocal Arts Ensemble; music of the Italian Renaissance presented in honor of *Bellini, Giorgione, Titian, and the Renaissance of Venetian Painting* and in conjunction with the Washington Early Music Festival (wgc)

June 25: Drew Minter, counter-tenor, and Tempesta di Mare; virtuoso music from the late Italian Renaissance and early baroque periods presented in honor of *Bellini, Giorgione, Titian, and the Renaissance of Venetian Painting* and in conjunction with the Washington Early Music Festival (wgc)

Film Programs

For details: (202) 842-6799 or www.nga.gov/programs/film.htm

Cézanne in Provence

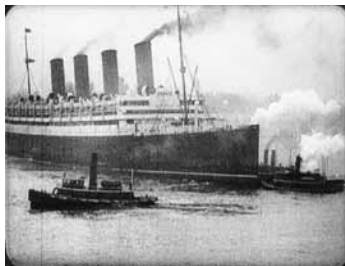
Cézanne in Provence chronicles the life and work of Paul Cézanne through his masterpieces showcased in the Gallery's exhibition. This one-hour documentary was filmed in high definition (HDTV) by Emmy Award-winning director Jackson Frost and produced by WETA-TV.

The Poetic Reality of Satyajit Ray

On May 4, in celebration of the fiftieth anniversary of Satyajit Ray's groundbreaking first feature *Pather Panchali*, Pratha Mitter, research professor at the University of Sussex, will present personal observations and a discussion of Ray's remarkable artistry, followed by the screening of an archival print of *Pather Panchali* (1955) from the collection of the Academy of Motion Picture Arts and Sciences.

Billy Wilder at 100

During May, the Gallery joins the American Film Institute Theater in saluting director Billy Wilder with this retrospective series celebrating the centennial of the birth of one of Hollywood's greatest satirical minds.



Film still from Charles Sheeler and Paul Strand's *Manhatta*, 1920, screening on June 11. From the collection of the Motion Picture Department, George Eastman House

Who Gets to Call It Art?

Celebrated Metropolitan Museum of Art curator Henry Geldzahler's career spanned abstract expressionism, pop art, and minimalism. David Hockney, Frank Stella, Jasper Johns, and many others give their impressions of Geldzahler in this concise compendium of art in the 1960s.

Video Master: Nam June Paik

Korean-born performance artist, musician, and sculptor Nam June Paik, who died in January 2006 at age 74, changed the course of twentieth-century art with his pioneering work in video and multimedia installation. This brief tribute to his extraordinary life includes a sampling of short, seminal pieces from his early career, such as *Button Happening* (1965), *Cinéma Metaphysique* 2, 3, and 4 (1967–1972), and *You Can't Lick Stamps in China* (1978).

In Praise of Independents: "The Flaherty"

Selections of new experimental, documentary, and short fictional films are presented from this oldest American showcase, named for pioneer American documentary filmmaker Robert Flaherty.

Theo Angelopoulos: Myth and History

Greek director Theo Angelopoulos (b. 1935) has created a monumental body of work that forms an odyssey through the history, myth, and culture of Greece. Practically unknown in the U.S. despite many major awards and retrospectives abroad, Angelopolous is currently working on his third trilogy, whose first part (*The Weeping Meadow*) closes this program.

Cleophas and His Own

In a new quasi-documentary narrative film, artist Marsden Hartley (portrayed by actor Michael Maglaras), ensconced in his Maine studio, narrates his epic poem *Cleophas and His Own* about the sad fate of the Mason family—a fisher family with whom the artist lived for a short time, and whose son became his great love. Hartley's poetic memoir makes up the entire screenplay of this beautiful film.

Manhatta and Charles Sheeler

Pianist and composer Donald Sosin performs his original score for artist Charles Sheeler's short experimental film *Manhatta*, the most celebrated of America's early art films, completed in 1921 with photographer Paul Strand. Sosin and vocalist Joanna Seaton perform original scores for *Twenty-four Dollar Island* (Robert Flaherty, 1927), *Autumn Fire* (Jay Leyda, 1930), and *A Bronx Morning* (Herman G. Weinberg, 1932).

Family Activities

For details: (202) 789-3030 or www.nga.gov/programs/family.htm.

Children must be accompanied by an adult.

Family Workshop

West Building Rotunda (wb) Required online registration

Making Faces
May 7 and May 14
1:00–3:00
Ages 8–12

While sketching in the galleries, investigate the many ways artists make portraits. Participants will learn techniques for drawing faces. Led by artist and educator Clare Grizzard.

Adventures in Art

West Building Mall entrance

A special audio program for children aged seven to twelve highlights the Gallery's collection of seventeenth-century Dutch and Flemish paintings. Rental: \$3; \$2 additional headphones

Stories in Art

East Building entrance (eb) / Ages 4–7 Space is limited / Sign-in begins at 11:00 on program date

My Name Is Georgia
By Jeanette Winter
May 21 at 11:30 and 1:00

Learn about Georgia O'Keeffe through this story and a tour of her paintings. Participants will create their own flowers.

Olivia
By Ian Falconer
June 11 at 11:30 and 1:00

Meet Olivia, a pig with pizzazz who likes to visit the museum. Examine paintings by Jackson Pollock and make a painting to take home.

Family and Youth Programs are made possible in part by the generosity of the Prince Charitable Trusts.

Additional support for 2006 has been provided by The Morris and Gwendolyn Cafritz Foundation.

Children's Film Program

East Building Auditorium (eba) / First-come, first-seated / For details: www.nga.gov/programs/flmchild.htm

Five Children and It
(John Stephenson, U.K., 2004, 89 mins.)
May 13 at 10:30 / May 14 at 11:30
Ages 8 and up

Based on the 1902 book by Edith Nesbit, this film recounts how five children accidentally uncover a magical creature—an ancient and irritable sand fairy—who grudgingly agrees to grant them one wish per day. However, the children discover that their wishes may turn out quite differently than they expect!

Pelican Man
(Liisa Helminen, Finland, 2004, 89 mins.)
June 3, 7, and 14 at 10:30
June 4 at 11:30
Ages 7 and up

A pelican takes human form, rents an apartment, and gets a job; no one notices that he is actually a bird except ten-year-old Emil. Find out if they can keep the pelican man's true identity a secret. *In Finnish with English subtitles.*

The Children's Film Program is made possible by the generous support of washingtonpost.com.

information



Gallery Shops

West Building, Ground Floor

Accessories, decorative items, and framed and unframed reproductions of famous works of art in many sizes and formats—including posters, postcards, and stationery—are available.

Concourse Bookstore

Gallery exhibition catalogues, collection guides, and other publications complement this shop's extensive holdings of books, videos, and DVDs on art, design, architecture, and photography.

Concourse Children's Shop

Books, games, toys, and puzzles will delight the young and young at heart.

Ordering Information

To order from the Gallery Shops, call (202) 842-6002 or (800) 697-9350; fax (202) 789-3047; or e-mail mailorder@nga.gov. You may also visit the shops online at www.nga.gov/shop.

Restaurants

www.nga.gov/ginfol/cafes.htm

Cascade Café/Espresso & Gelato Bar East Building, Concourse

Cascade Café
Monday–Saturday, 11:00–3:00
Sunday, 11:00–4:00

The Cascade Café, with a view of the waterfall, offers soups, salads, specialty entrées, wood-fired pizzas, sandwiches, sushi, and freshly baked desserts.

Espresso & Gelato Bar
Monday–Saturday, 10:00–4:30
Sunday, 11:00–5:30

A full espresso bar offers freshly made gelato and sorbetto, panini, and specialty sweets.

Terrace Café East Building, Upper Level

Café Dada
Through May 14, 2006

Overlooking the entrance to the *Dada* exhibition and the atrium, the Terrace Café offers a relaxing coffeehouse atmosphere with a selection of salads, sandwiches, and specialty drinks and desserts.

Saturday and Sunday, 11:00–3:00

Garden Café West Building, Ground Floor

Café Provençal
Through May 7, 2006

The Garden Café is transformed into a French-style bistro, offering an à la carte menu and buffet specially created by a chef from Paul Cézanne's beloved French countryside of Provence. The regular menu returns on May 8.

Monday–Saturday, 11:30–3:00
Sunday, 12:00–4:00
Concert menu available
Sunday, 4:00–6:00

Pavilion Café Sculpture Garden

With a view of the Sculpture Garden, the Pavilion Café offers pizzas, sandwiches, salads, desserts, and full beverage service.

Monday–Thursday and
Saturday, 10:00–6:00
Friday, 10:00–8:30
Sunday, 11:00–6:00

Jazz in the Garden

From 5:00 to 8:30 every Friday evening, Memorial Day through Labor Day, visitors can dine indoors or outdoors around the grand fountain and enjoy live jazz music performed by an eclectic mix of top Washington-area artists. Admission is free and the Sculpture Garden remains open until 9:30.

Radio Program

This Week at the National Gallery with host Barbara Tempchin airs each Sunday morning at 10:43 on WGMS 103.9 and 104.1 FM in the Washington area and each Saturday afternoon at 12:55 on WBJC 91.5 FM in the Baltimore area.

Charitable Giving

Your charitable gift supports many important Gallery programs and acquisitions. For information about private giving opportunities, please call or write:

Development Office
National Gallery of Art
2000B South Club Drive
Landover, MD 20785
Tel.: (202) 842-6372
E-mail: giving@nga.gov
Web: www.nga.gov/support/index.htm

Gallery Information

Admission

Admission to the Gallery, its Sculpture Garden, and its activities is free, except as noted.

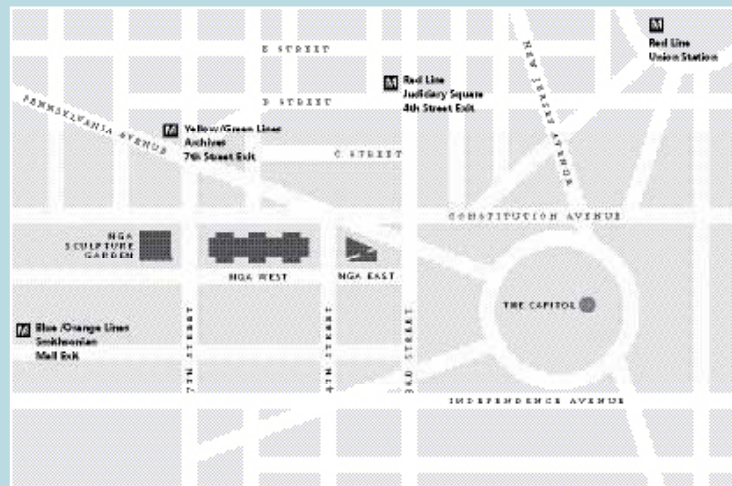
Security Check

Visitors are asked to present all bags for inspection as they enter the Gallery. Backpacks and parcels must be left in the checkrooms. No parcels larger than 17 x 26 inches are accepted in the checkrooms. Suitcases are permitted but must be x-rayed at the East or West Building entrances on Fourth Street before being accepted in the checkrooms.

The Collection

The National Gallery of Art, one of the world's preeminent museums, was created for the people of the United States of America by a joint resolution of Congress accepting the gift of financier, public servant, and art collector Andrew W. Mellon in 1937. European and American paintings, sculpture, works on paper, photographs, and decorative arts are displayed in the collection galleries and Sculpture Garden. Temporary exhibitions of art from countries and cultures throughout the world are presented on a regular basis.

Works of art on paper and photographs that are not on view may be seen by appointment on weekdays; call (202) 842-6380 for prints and drawings or (202) 842-6144 for photographs.



Library

library.nga.gov

The Gallery's library collection of more than 330,000 books and periodicals on the history, theory, and criticism of art and architecture emphasizes Western art from the Middle Ages to the present, and American art from the colonial era to the present. Adult researchers may gain access to the library by calling (202) 842-6511. The library is closed weekends and all federal holidays.

Location

The Gallery is located on Constitution Avenue between Third and Ninth Streets NW. Nearby Metro-rail stations are located at Judiciary Square (red line), Archives/Navy Memorial (yellow and green lines), and Smithsonian (blue and orange lines). Metrobus stops are located on Fourth Street, Seventh Street, and Pennsylvania Avenue. The DC Circulator bus stops at Fourth Street and Madison Drive NW and Seventh Street and Constitution Avenue NW.

Hours

Gallery
Monday–Saturday, 10:00–5:00
Sunday, 11:00–6:00

Sculpture Garden
Monday–Thursday and Saturday,
10:00–7:00
Friday, 10:00–9:30
Sunday, 11:00–7:00

Exhibition and General Information

Call (202) 737-4215 or visit the Web site at www.nga.gov. Call (202) 842-6176 for the Telecommunications Device for the Deaf (TDD).

Calendar

To access the calendar on the Web, go to www.nga.gov/ginfol/calendar.htm.

Call (202) 842-6662 or e-mail calendar@nga.gov to receive this free bimonthly calendar of events by mail.

Group Tours

Free one-hour tours for groups of twenty or more adults may be booked three weeks to four months in advance. Call (202) 842-6247.

Accessibility

Ramps for wheelchairs and strollers are located at the Sixth Street entrance to the West Building on Constitution Avenue NW and at the Fourth Street entrance to the East Building. Wheelchairs and strollers are available at all entrances. For information about access to public areas and galleries, refer to the *Map and Visitor's Guide* for the East and West Buildings at the Art Information Desks. Limited parking is available in front of the East Building for vehicles displaying the international symbol of accessibility (♿). The Sculpture Garden is accessible to those with disabilities. Call (202) 842-6690.

Assistive listening devices are available on a free loan basis. For East Building Auditorium programming, visit the building's Art Information Desk. For West Building Lecture Hall programming, visit the Constitution Avenue entrance Art Information Desk.

Sign language interpretation is available with three weeks' notice. Call (202) 842-6247 or TDD (202) 842-6176.

A wheelchair-accessible TDD has been installed at the public telephone adjacent to the stamp machine near the sales shop on the Concourse. Visit www.nga.gov/ginfol/disabled.htm for more information.

Over the next several years, sections of the collection of the National Gallery of Art will close for renovation. Check at the Art Information Desks for additional details or visit www.nga.gov/ginfol/renovation.htm.

Copyright © 2006 Board of Trustees, National Gallery of Art, Washington