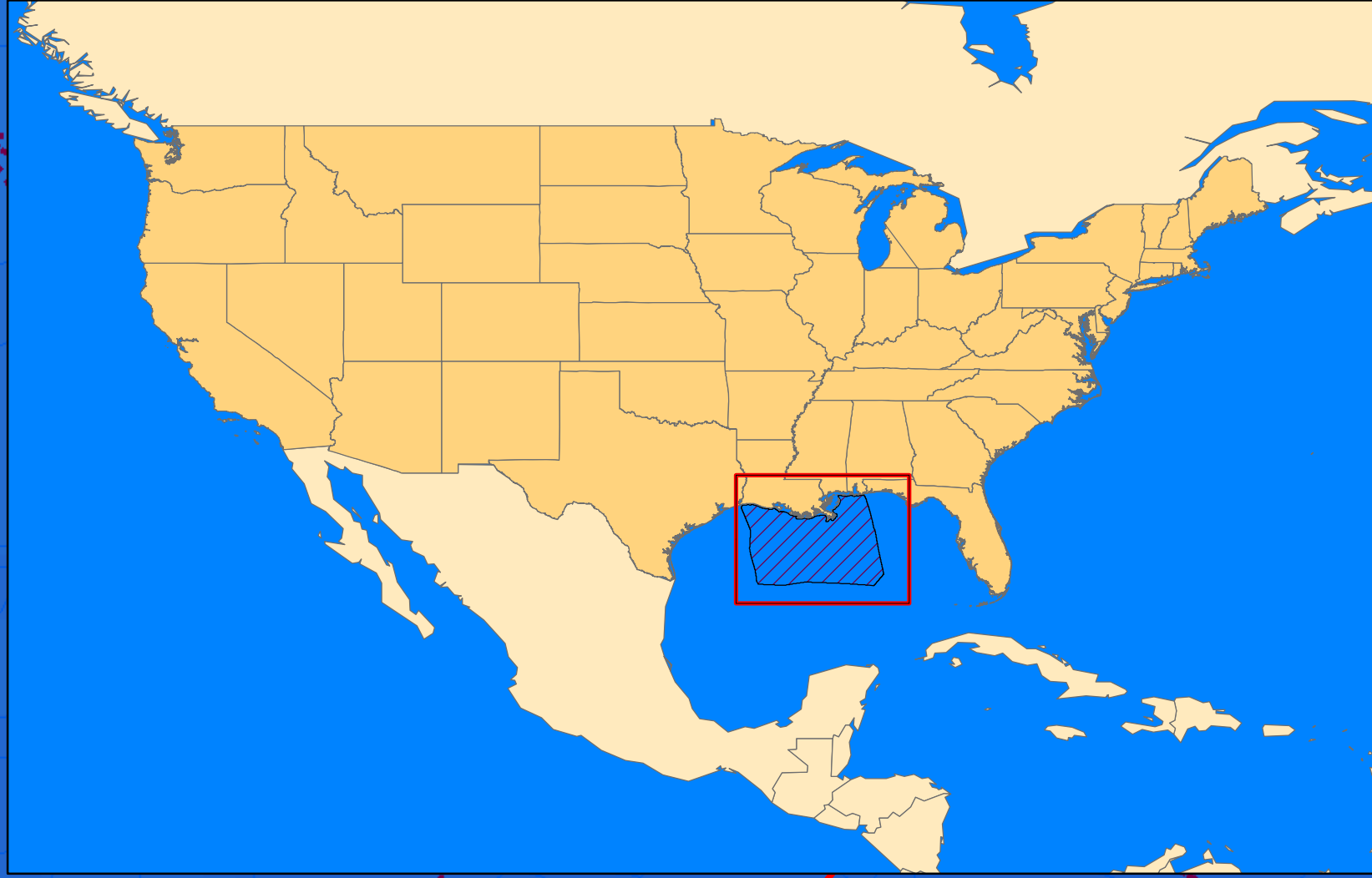
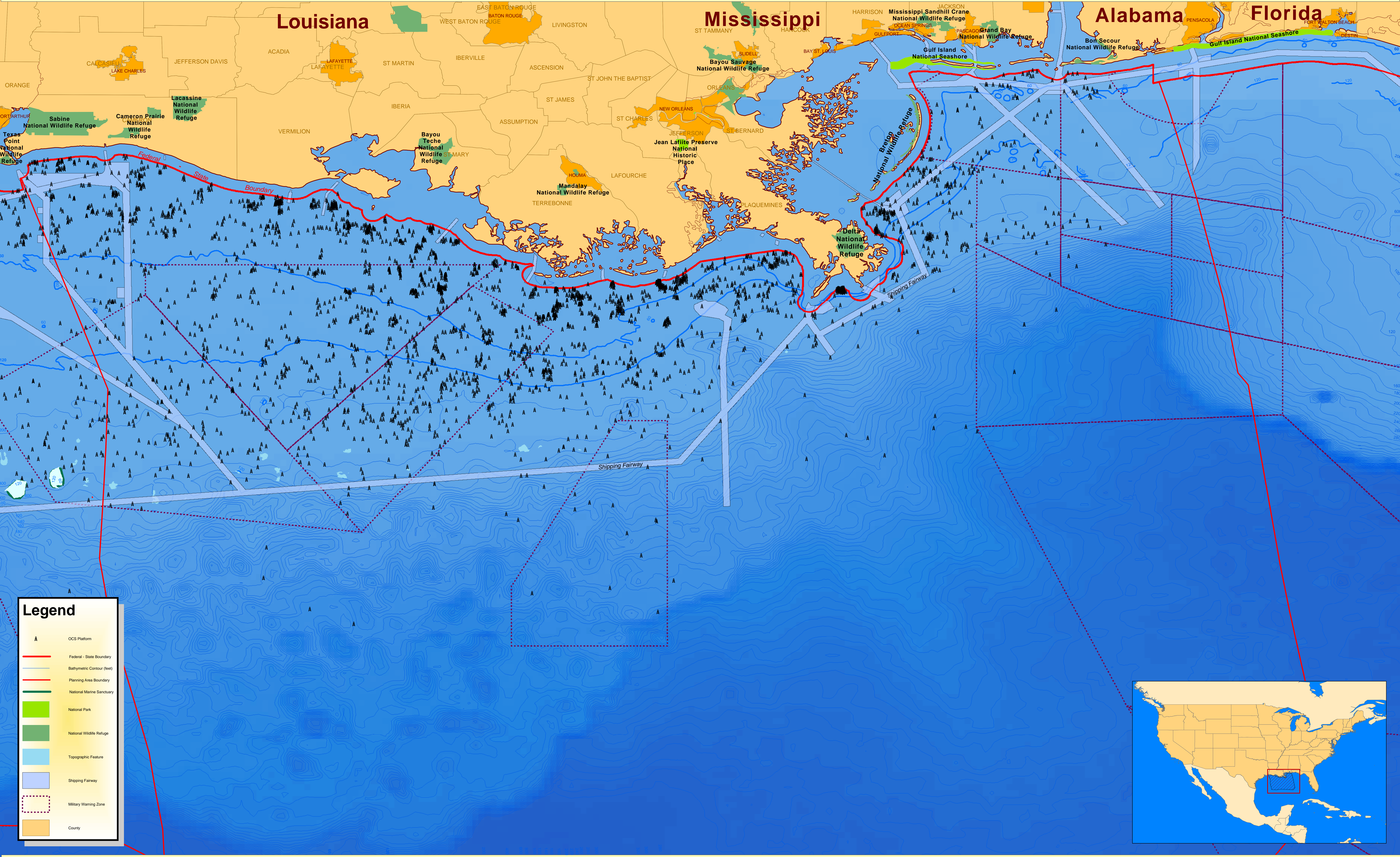


Programmatic EIS for Outer Continental Shelf Renewable Energy and Alternate Use

Current Uses on the Outer Continental Shelf



0 5 10 20 30 40 Nautical Miles

Not For Navigational Use
Scale: 1:720,000

Central Gulf of Mexico OCS Planning Area

ATTENTION USER: This map is a product of the Minerals Management Service (MMS), which is an agency of the U.S. Department of the Interior. The mission of MMS is to manage the mineral resources of the Outer Continental Shelf (OCS) in an environmentally sound and safe manner and to timely collect, verify and distribute mineral revenues from Federal and Indian lands.

The MMS does not warrant or guarantee the accuracy of this map nor assume any responsibility or liability for any reliance action. This map is not intended for use as a navigational tool nor as a legal document for Federal leasing purposes.

